

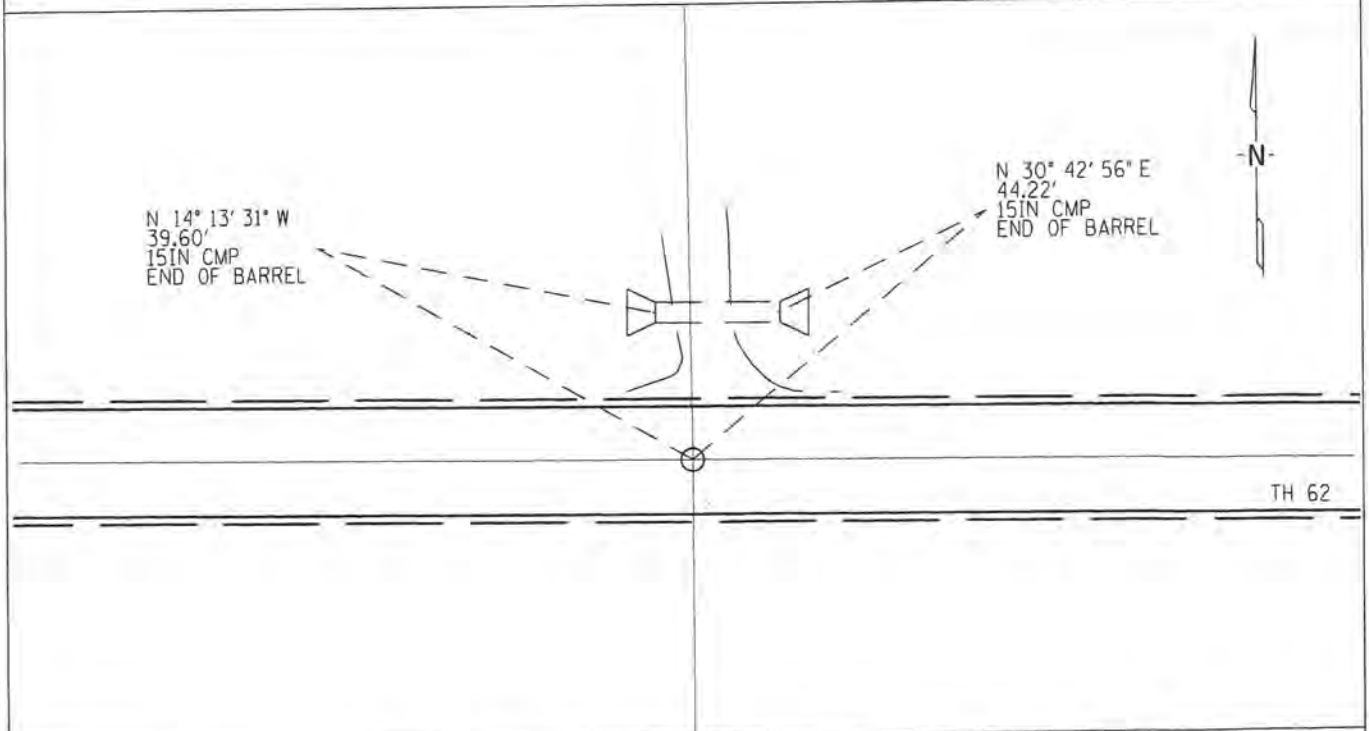
CERTIFICATE OF LOCATION OF GOVERNMENT CORNER

NORTH QUARTER Corner of Section 35, Township 105, Range 39

5TH Principal Meridian, State of Minnesota, County of MURRAY

At the corner location shown on the sketch:

- On _____ found a ALUMINUM NAIL WITH WASHER MARKED "RLS 23008" WAS DESTROYED
DATE _____
DURING CONSTRUCTION _____
- left monument as found lowered monument removed monument (explain)
- On 5/15/2014 placed a 1/2" X 18" IRON PIPE WITH RLS CAP 44606
DATE _____



Statement of evidence for this corner location is on back of this page.

I hereby certify that this survey, plan, or report was prepared by me or under my direct supervision and that I am a duly Licensed Land Surveyor under the Laws of the State of Minnesota.

Signature _____ Date _____ License No. 44606

Title: Land Surveyor Professional Engineer County Surveyor County Engineer

Statement of Evidence: North Quarter Corner of Section 35, Township 105 North, Range 39 West, 5th Principle Meridian, Murray County, Minnesota.

- 1861 This corner originally was set by D. W. Wellman and S. S. Smoot, Deputy Surveyors during the GLO survey which was completed in 1861.
- 1951 January 31, The Minnesota Department of Highways, n/k/a The Minnesota Department of Transportation (MN/DOT) Highway Right of Way Index Map No. 13-66 shows the corner not marked and without ties.
- 2011 July 13, Perry Zieske, LS 23008, set a survey marker with spike and RLS #23008 ring at North ¼ corner as per MN/DOT Hwy. 62 plans for accepted corner. In line with fence north.
- 2011 In December, Sam DeLeo, LS 40341 of Kramer Leas DeLeo, P.C. found an aluminum nail with washer marked "RLS 23008" at the location consistent with that described above. Coordinate values were established on the monument using RTK/GPS methods as follows:
Northing 105793.43
Easting 348159.93
Murray County Coordinates.
NAD83 (2007 HARN Adj.)
- 2014 On May 15th, 2014, Kyle Klasen, LS 44606 of WSB and Associates set a ½" x 18" iron pipe capped with 44606 after the re-construction of TH 62. The coordinate value of the Corner was obtained from MnDOT, District 7 survey department and established by Mr. DeLeo in December, 2011.